

SIGMA*Weld*

Weldable Primer Range

Protective Coating solutions that cover your needs



SIGMA*Weld* 199

SIGMA*Weld* 165

SIGMA*Weld* 120

SIGMA*Weld* 15

SIGMA*Weld* 10



**SIGMA
COATINGS**

| Protecting the Future

The Sigma Weldable Primer Range

Sigma Protective Coatings is dedicated to the development, manufacture and supply of coatings to meet the very challenging needs of specific industries. With a heritage of outstanding expertise in coatings technology and decades of international investment in research and development for the protective coatings market, no company could be better placed than Sigma to meet the fast-changing global challenges of this technically demanding sector.

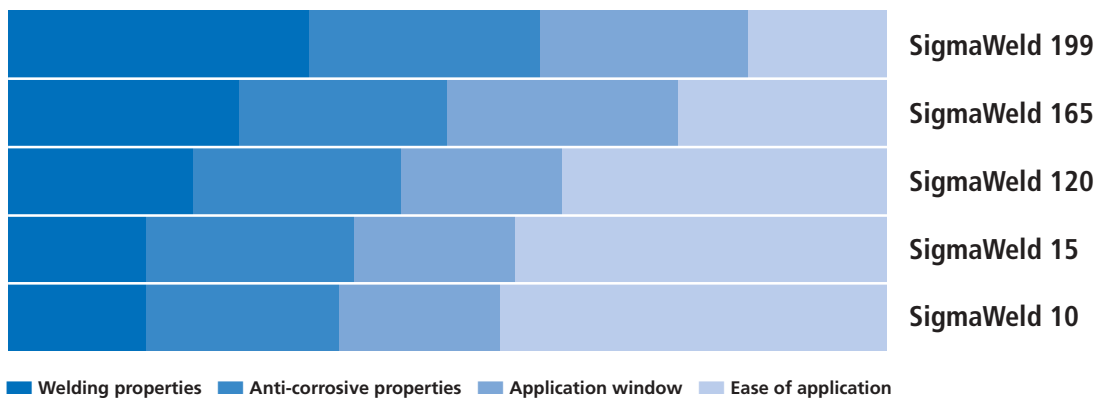
Sigma Coatings offers a full range of pre-fabrication primers (shopprimers) for the temporary protection of the steel during cutting, welding and transportation.

All pre-fabrication primers could be part of the total paint system under atmospheric and/or immersed conditions.

The SigmaWeld range includes several technologies, like epoxy, alkyd and ethyl silicates.

The latest development within the SigmaWeld range is the introduction of a water based Acrylic pre-fabrication primer which can be used on an automatic production line.





SigmaWeld Range



SigmaWeld 199

A two-component moisture curing low zinc (ethyl) silicate pre-fabrication primer.

- Low zinc
- Excellent anti-corrosive properties
- Suitable for immersed conditions
- Welding certificates (including Lloyd's Register of Shipping)
- Excellent cutting and welding properties including MIG/MAG
- Provides regular, smooth weld seams

SigmaWeld 120

A two-component polyamide cured epoxy pre-fabrication primer

- Good anti-corrosive properties
- Suitable for atmospheric conditions
- Suitable for automatic application
- Fast drying
- Good cutting and welding properties including MMA and gravity welding

SigmaWeld 165

A two-component moisture curing higher zinc (ethyl) silicate pre-fabrication primer.

- Excellent anti-corrosive properties
- Suitable for immersed conditions
- Balanced zinc level
- Good cutting and welding properties including MIG/MAG
- Approved by Lloyd's register of shipping



SigmaWeld 15

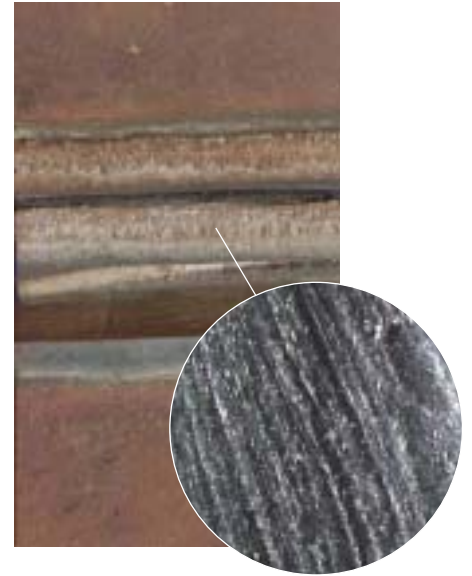
A one component alkyd based anti-corrosive pre-fabrication primer

- Suitable for atmospheric conditions
- User friendly
- Fast drying
- Good cutting and welding properties with electrode welding
- Suitable for automatic application

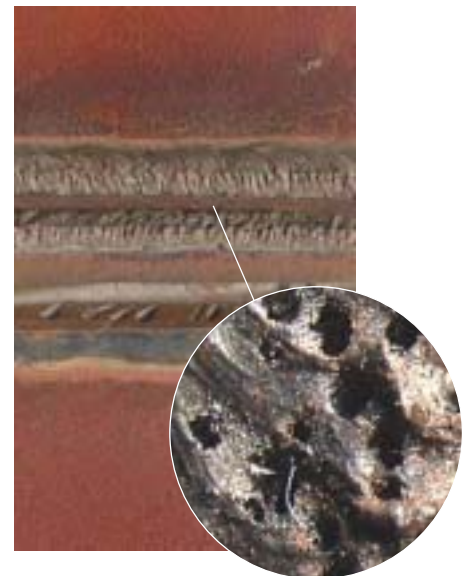
SigmaWeld 10

A one-component water based anti-corrosive pre-fabrication primer

- One component
- Suitable for an automatic production line
- Suitable for atmospheric conditions
- Fast drying
- User friendly
- Good cutting and welding properties with electrode welding



Fracture of weld seam with SigmaWeld 199



Fracture of weld seam without suitable welding primer

SigmaWeld applications



The SigmaWeld range is widely used and respected in all key industry sectors, meeting the very demanding challenges required to protect major assets.



Infrastructure

- Bridges
- Port and harbour structures
- Tanks
- Stadiums and airports

Offshore

- Drinking water tanks
- Slop tanks
- Pipelines

Oil and Gas

- Land storage tanks
- Waste water facilities
- Pipelines

Power

- Storage tanks
- Waste water facility

Performance you can trust

All our coatings are manufactured to world-leading standards. So you can rely on a consistent performance from each and every coating in the SigmaWeld range.



The SigmaWeld Range Renamed

SigmaWeld 199 (*SigmaWeld MC*)

- Two component ethyl silicate pre-fabrication primer

SigmaWeld 165 (*Sigma Proferral MC*)

- Two component ethyl silicate pre-fabrication primer

SigmaWeld 120 (*Sigmaweld EP Shopprimer*)

- Two component epoxy based pre-fabrication primer

SigmaWeld 15 (*Sigmasteel Shopprimer*)

- One component alkyd based pre-fabrication primer

SigmaWeld 10 (*Sigmetal Shopprimer*)

- One component water based pre-fabrication primer



Waterbased



Compatible with
cathodic protection



economical



In shop
application

Worldwide Support Services

Sigma Coatings field technical support staff are among the most highly skilled and trained in the coatings business. With in-depth knowledge of the working realities facing the industries we supply, our technical experts offer an unsurpassed perspective on the coatings options that can help your industry to function optimally, maximising technical performance and minimising expensive down time.

Complementary documentation

SigmaWeld 199
Product data sheet 7177

SigmaWeld 165
Product data sheet 7171

SigmaWeld 120
Product data sheet 7173

SigmaWeld 15
Product data sheet 7112

SigmaWeld 10
Product data sheet 7179



Andrews Coatings Ltd
Carver Building, Littles Lane
Wolverhampton
West Midlands WV1 1JY
Tel: 01902 712286
Fax: 01902 426574
sales@sigmacoatingsdirect.co.uk
www.sigmacoatingsdirect.co.uk

Member of the
SigmaKalon Group



947549

